



GOOD MORNING
Have Good Trading Day

TUESDAY



Price is what you pay.
Value is what you get.

- Warren Buffet

MARKET PLUSE

INDIAN INDICES

NAME	CMP	NET CH.	%
SENSEX	27361	-108	-0.40
NIFTY	8260	-39	-0.42

INDIAN ADR'S

SYMBOL	CLOSE	GAIN/ LOSS %
DRREDDY	65.57	-0.50
HDFCBANK	63.56	+1.24
ICICIBK	9.07	-0.66
INFY	18.50	-0.64
TATAMOTOR	29.48	-0.74
WIPRO	12.35	+0.90

FII AND MF ACTIVITY

SYMBOL	In Crs.
FIIs Eq (Provisional)	724.51
FIIs Index Future	1332.09
FIIs Index Options	-575.06
FIIs Stock Future	-474.81
FIIs Stock Options	-179.24
DII's Eq (Provisional)	-530.78

CURRENCY

RBI RATE	26-OCT-2015
RUPEE - \$	64.9603
EURO	71.6447
YEN 100	53.6300
GBP	99.5452

MARKET PLUSE

GLOBAL INDICES

NAME	CMP	NET CH.	%
DOW	17622	-23	-0.14
NASDAQ	5034	+2	+0.06
NIKKEI	18820	-126	-0.67
HANG SENG	22929	-187	-0.81
SGX NIFTY	8239	-29	-0.35

WORLD COMMODITIES

FUTURE	U\$\$	CHANGES
CRUDE	43.38	-0.60
NATURAL GAS	2.367	+0.014
GOLD	1164.2	-2.0
SILVER	15.835	-0.070
COPPER	2.3495	-0.0075

WORLD EVENTS

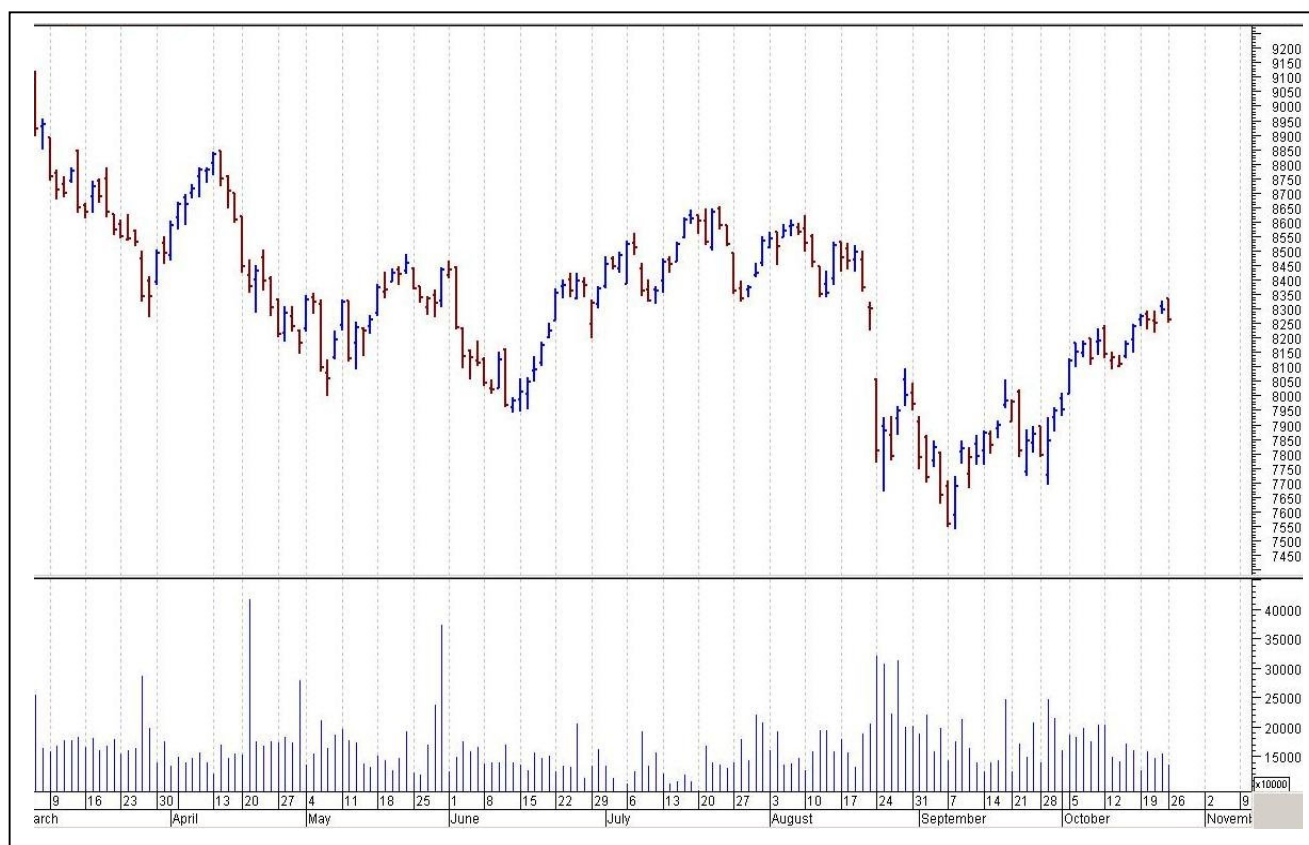
- US: Core Durable Goods Orders m/m
- CB Consumer Confidence
- UK:Prelim GDP q/q

TOP STORY

- Crompton Greaves to sell co's power system biz in Canada To PTI Holdings Corp For EV Of \$20m
- Mphasis Says Friedrich Froeschl Resigns As Non-Exec Chairman & Independent Director
- Maxwell Ind To Allot 30 Lakh Shares To Promoters On Conversion Of Same Number Of Warrants
- NIIT Tech signs long-term strategic agreement with FlyDubai
- AB Nuvo Says Gujarat High Court Approves Scheme Of Arrangement Between Co, Madura Garments & Pantaloon Fashion
- IL&FS Engg Says SAT Stays SEBI Order Imposing `59 Cr Penalty On Co For Insider Trading
- Raymond Says Chhindwara Plant Workmen Have Gone On Strike Due To Unlawful Bonus Demands
- Nestle says plan to resume sales of Maggi Noodles in India in November
- State Bank of Mysore Q2 Net Profit Up 29.5% At `132 Cr Vs `102 Cr (YoY). NII Up 2.5% At `526 Cr Vs `514 Cr (YoY). Net NPA At 2.22% Vs 2.10 % (QoQ)



NIFTY CHART



MARKET COMMENTARY

Indian markets suffered some profit booking on Monday despite making a good start, Sensex and Nifty struggled amid profit-taking on higher levels and both the benchmarks came off from over two-month highs hit in the previous session. The Nifty could not hold on to 8300 levels, after reclaiming it in early trade. Traders were a bit concerned about an Assocham study which said that inflation may have dropped significantly from last year, but most Indians still find prices of goods and services consumed on a daily basis growing beyond their comfort level. Selling was spread across the board and not only the blue-chips but the broader markets too suffered losses for the day. For today's trade Nifty likely to trade in the range between 8280 - 8310 in the upper side and 8240 – 8210 in the lower side.

MARKET LEVELS

	CMP	SUPPORT LEVELS				RESISTANCE LEVELS			
NIFTY	8260	8240	8210	8180	8150	8280	8310	8340	8380
USDINR	64.95	64.87	64.81	64.76	64.6	65.05	65.15	65.2	65.25

FUTURES CORNER

SCRIPS	CLOSE	SUPPORT	TARGET		REMARKS
		STOP LOSS	T1	T2	
JUBLFOOD (SELL)	1510.45	1524	1494	1482	TRADING CALL
DIVISLAB	1094.55	1086	1104	1118	TRADING CALL
WOCKPHARMA	1618.7	1611	1634	1648	TRADING CALL

EQUITY CORNER

SCRIPS	CLOSE	SUPPORT	TARGET		REMARKS
		STOP LOSS	T1	T2	
PIONEEREMB	42.2	41	45	47	TRADING CALL

DELIVERY BASED CALL / INVESTMENT CALL

SCRIPS	CMP	SUPPORT	TARGET		REMARK
		STOP LOSS	T1	T2	

BULK DEALS (BSE)

SCRIP	CLIENT NAME	BUY/SELL	QUANTITY	PRICE
SOLARINDS	SBI MUTUAL FUND	B	455,609	3,100
SOLARINDS	OMAN INDIA JOINT INVESTMENT FUND	S	774,195	3,100.42
SOLARINDS	KOTAK MAHINDRA MUTUAL FUND KOTAK SELECT FOCUS FUND	B	103,500	3,100

BULK DEALS (NSE)

SCRIP	CLIENT NAME	BUY/SELL	QUANTITY	PRICE
AUTOIND	ICM FINANCE PRIVATE LIMITED	BUY	105000	47
AUTOIND	THE INDIAMAN FUND MAURITIUS LIMITED	SELL	113904	47

SCRIP'S IN F&O BAN

(To resume for normal trading below 80% of market wide limit required)

IBREALEST,



NIFTY 50 STOCKS: SUPPORT & RESISTANCE						
Symbol	Close	Support 1	Support 2	Pivot Point	Resistance1	Resistance2
ACC	1393.8	1383.5	1373.3	1395.5	1405.7	1417.7
ADANIPORTS	316.4	313.0	309.6	315.0	318.4	320.4
AMBUJACEM	208.7	206.7	204.7	208.3	210.2	211.8
ASIANPAINT	817.7	804.6	791.5	824.3	837.4	857.1
AXISBANK	521.1	515.9	510.8	524.3	529.4	537.8
BAJAJ-AUTO	2575.6	2543.1	2510.6	2562.5	2595.0	2614.4
BANKBARODA	172.1	170.4	168.8	172.7	174.3	176.5
BHARTIARTL	352.2	344.3	336.4	354.8	362.7	373.2
BHEL	217.6	211.7	205.8	215.4	221.3	225.0
BOSCHLTD	21521.9	21325.6	21129.4	21646.8	21843.1	22164.3
BPCL	903.8	897.7	891.7	908.0	914.1	924.4
CAIRN	158.2	155.6	153.1	157.8	160.4	162.6
CIPLA	681.3	675.1	669.0	679.6	685.7	690.2
COALINDIA	333.4	328.8	324.1	336.7	341.4	349.3
DRREDDY	4200.8	4150.5	4100.3	4205.8	4256.0	4311.2
GAIL	329.1	324.1	319.1	327.9	332.9	336.7
GRASIM	3690.2	3635.2	3580.3	3675.0	3729.9	3769.7
HCLTECH	863.6	857.6	851.6	863.1	869.1	874.7
HDFC	1312.7	1294.1	1275.4	1322.0	1340.7	1368.6
HDFCBANK	1101.5	1094.3	1087.0	1104.2	1111.5	1121.4
HEROMOTOCO	2620.6	2601.1	2581.7	2617.1	2636.5	2652.5
HINDALCO	85.4	84.5	83.7	85.7	86.6	87.8
HINDUNILVR	808.6	802.8	797.1	806.4	812.2	815.8
ICICIBANK	285.4	282.8	280.3	286.3	288.8	292.3
IDEA	141.6	139.5	137.4	141.2	143.2	144.9
INDUSINDBK	958.0	954.3	950.7	959.6	963.2	968.5
INFY	1152.2	1144.0	1135.9	1151.3	1159.4	1166.6
ITC	356.5	354.4	352.3	357.1	359.2	361.9
KOTAKBANK	661.9	654.7	647.4	661.8	669.1	676.2
LT	1508.5	1498.3	1488.2	1514.2	1524.3	1540.2
LUPIN	2051.6	2023.3	1995.0	2060.1	2088.4	2125.1
M&M	1245.3	1234.7	1224.0	1247.3	1257.9	1270.5
MARUTI	4385.2	4356.6	4328.1	4404.3	4432.8	4480.5
NTPC	132.9	131.6	130.3	132.5	133.8	134.8
ONGC	256.5	253.6	250.8	257.2	260.0	263.6
PNB	134.3	133.0	131.7	135.0	136.3	138.4
POWERGRID	135.8	135.1	134.4	136.0	136.7	137.6
RELIANCE	942.9	935.1	927.4	949.1	956.8	970.8
SBIN	251.3	249.1	246.9	252.5	254.7	258.2
SUNPHARMA	888.8	885.2	881.7	889.7	893.2	897.7
TATAMOTORS	384.6	381.9	379.3	385.9	388.6	392.6
TATAPOWER	70.7	69.9	69.2	70.9	71.7	72.7
TATASTEEL	249.7	246.8	243.9	249.2	252.1	254.5
TCS	2536.6	2518.1	2499.7	2533.6	2552.0	2567.5
TECHM	542.7	539.8	537.0	542.4	545.2	547.8
ULTRACEMCO	2845.1	2808.3	2771.6	2865.8	2902.5	2960.0
VEDL	104.9	102.2	99.6	105.0	107.7	110.5
WIPRO	569.1	565.1	561.1	569.7	573.7	578.3
YESBANK	746.2	734.5	722.9	755.3	766.9	787.7
ZEEL	425.0	420.4	415.8	428.8	433.4	441.8



CORPORATE ACTION / BOARD MEETINGS

NSE Download Ref.No.:NSE/CML/30981:- Face Value Split - Sarla Performance Fibers Limited (SARLAPOLY) from Rs.10 to Rs.1 w.e.f October 29, 2015

BOARD MEETINGS

COMPANY NAME	DATE	PURPOSE	RS. PER SH.
IRB	27-Oct-15	Dividend	2
CYIENT	27-Oct-15	Dividend	3
ASIANPAINT	28-Oct-15	Dividend	2.2
CAPLIPOINT	29-Oct-15	Annual General Meeting/Dividend	5
FOSECOIND	29-Oct-15	Dividend	
KITEX	29-Oct-15	Dividend	0.75
SARLAPOLY	29-Oct-15	Face Value Split From Rs 10 To Re 1	
GODREJCP	30-Oct-15	Dividend	
WELSPUNIND	30-Oct-15	Dividend	6.5
SSWL	30-Oct-15	Dividend	
TRIDENT	2-Nov-15	Dividend	
SUNTV	2-Nov-15	Dividend	
TIRUMALCHM	3-Nov-15	Dividend	
SHREECEM	5-Nov-15	Annual General Meeting/ Dividend	14
DABUR	5-Nov-15	Dividend	
COLPAL	5-Nov-15	Dividend	
SRTRANSFIN	5-Nov-15	Dividend	
MAYURUNIQ	9-Nov-15	Dividend	
PAGEIND	16-Nov-15	Dividend	

NEWS & RUMOURS:

- Gold (Spot Dollar) major support = \$1139/\$1114 & Resistance = \$1195/\$1222.
- Crude oil range->\$39 to \$49.
- Stock Rally Stalls as Dollar Slides on Central Bank Speculation: - The four-week rally in global stocks stalled, while the dollar slipped against major peers as investors waited for more evidence that central banks will add stimulus to revive the global economy.
- Yellen, consensus-builder, needs to send strong signal at Fed [meet:-](#) Federal Reserve Chair Janet Yellen, praised as an adept listener and consensus builder, may need to adopt a stronger tone at this week's policy meeting if she expects to keep a December interest rate rise in play.
- Sales of New U.S. Homes Slump to Lowest Level since November: - Purchases of new U.S. homes slumped in September to a 10-month low, disrupting a trend of steady improvement this year in the industry. Sales dropped 11.5 percent to a 468,000 annualized pace and the prior two months were revised lower, Commerce Department figures showed Monday. The September rate, which included a record percentage decline in the Northeast, was weaker than all economists' forecasts in a Bloomberg survey.
- Gold edges up from 2-week lows but gains held in check: - Gold prices edged higher on Monday, but remained close to two-week lows as prospects for higher U.S. interest rates continued to underpin dollar demand.
- Oil falls as supply glut swells storage: - Oil edged lower on Monday on a global supply glut pushing fuel storage sites close to capacity, and with fewer speculators betting on a rise in crude prices.

TRENDS & OUTLOOK – DATE: 27- Oct- 2015

PRECIOUS METALS:

COMMDITY (MCX)	S2	S1	PIVOT POINT	R1	R2
GOLD (Dec)	26328	26600	26845	27165	27421
SILVER (Dec)	34800	36000	37038	38500	39400

BASE METALS

COMMDITY (MCX)	S2	S1	PIVOT POINT	R1	R2
COPPER (Nov)	327	333	341	347	352
ZINC (Oct)	107.55	109.90	112.75	115.25	118.20
LEAD (Oct)	108.30	110.50	113.30	115.45	118.20
NICKEL (Oct)	645	662	680	696	714

ENERGY

COMMDITY (MCX)	S2	S1	PIVOT POINT	R1	R2
CRUDE OIL (Nov)	2700	2790	2910	3030	3135
NATURAL GAS (Nov)	142	148	156	161	168

DATE TALKS : TODAY'S ECONOMIC DATA :

Prelim GDP of GBP, Core Durable Goods Orders, Durable Goods Orders, S&P/CS Composite-20 HPI, Flash Services PMI, CB Consumer Confidence, Richmond Manufacturing Index.



Registered Office

Indira House, 3rd Floor, 5 Topiwala Lane,
Opp. Lemington Road Police Station, Grant Road (East), Mumbai - 400007.

Corporate Office

'Ramavat House' E-15, Saket Nagar, Indore - 452018 (M.P.)

Customer Care

Tel: +91-731-4097170/ 71/ 72/ 73/ 74 M. +91 93031 72345

Email: customercare@indiratrade.com www.indiratrade.com



INSTITUTIONAL DEALING UNIT

Africa House, 5, Topiwalla Lane, Lamington Road, Mumbai, 400007

Tel: +91 22 30080678 Fax : +91 22 23870767 Email : ie@indiratrade.com

Disclaimer

This report is for private circulation within the Indira Group. This report is strictly confidential and for information of the selected recipient only and may not be altered in any way, transmitted to, copied or distributed, in part or in whole, to any other person or to the media or reproduced in any form. This report should not be construed as an offer or solicitation to buy or sell any securities or any interest in securities. It does not constitute a personal recommendation or take into account the particular investment objectives, financial situations, or any such factor. The information, opinions estimates and forecasts contained here have been obtained from, or are based upon, sources we believe to be reliable, but no representation of warranty, express or implied, is made by us to their accuracy or completeness. Opinions expressed are our current opinions as of the date appearing on this material only and are subject to change without notice.